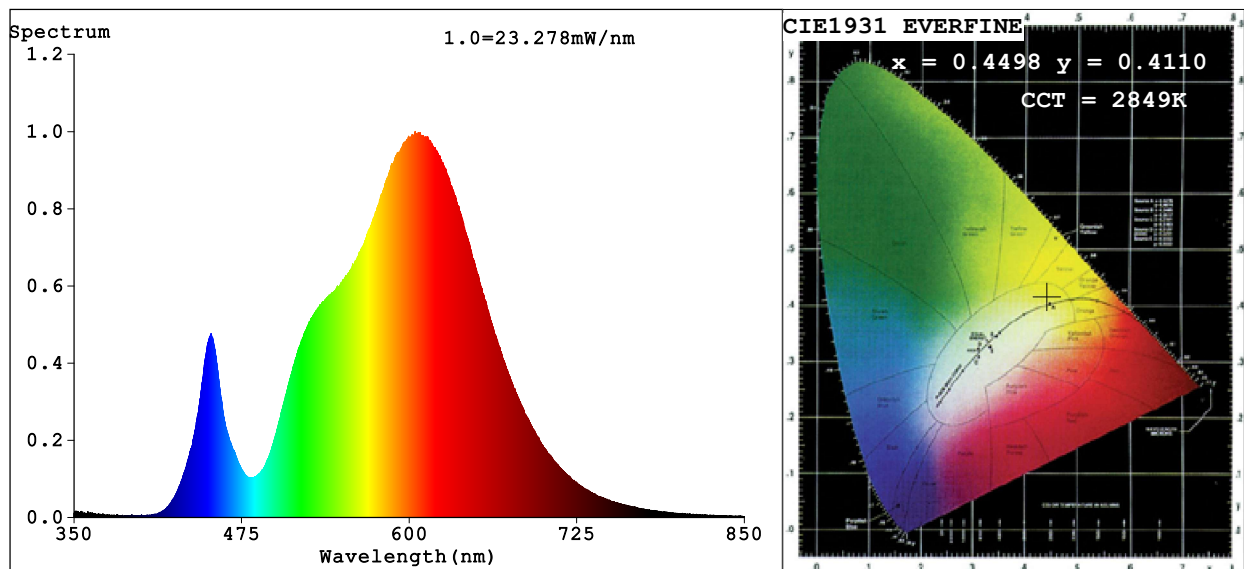


Spectrum Test Report



Color Parameters:

Chromaticity Coordinate: $x=0.4498$ $y=0.4110$ $u'=0.2559$ $v'=0.5260$

CCT=2849K (Duv=0.0011) Dominant WL:Ld =583.1nm Purity=58.4%

Ratio:R=23.8% G=74.4% B=1.7%; Peak WL:Lp=604.5nm FWHM=137.2nm

Render Index:Ra=81.9 CRI=75.6 TM30:Rf=81 Rg=98

R1 =81 R2 =88 R3 =94 R4 =81 R5 =79 R6 =84 R7 =85

R8 =62 R9 =12 R10=71 R11=80 R12=62 R13=82 R14=96 R15=74

Photo Parameters:

Flux = 1120 lm Eff. : 80.85 lm/W Fe = 3.459 W

Electrical parameters:

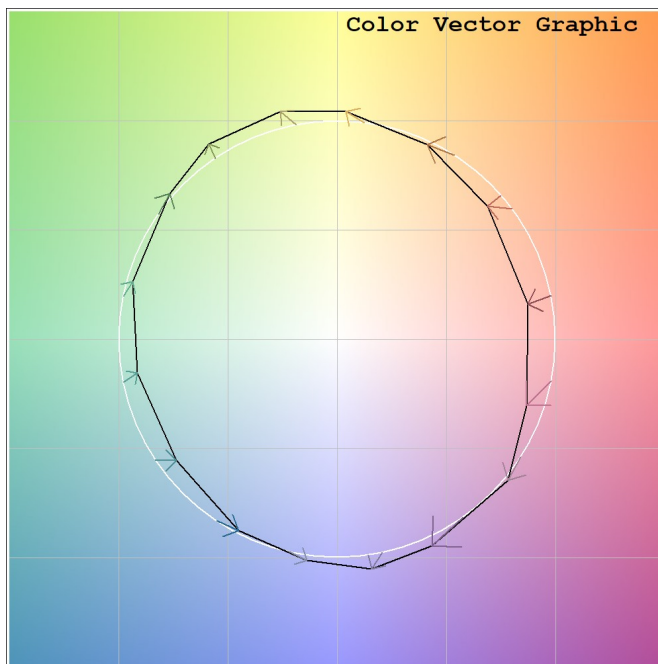
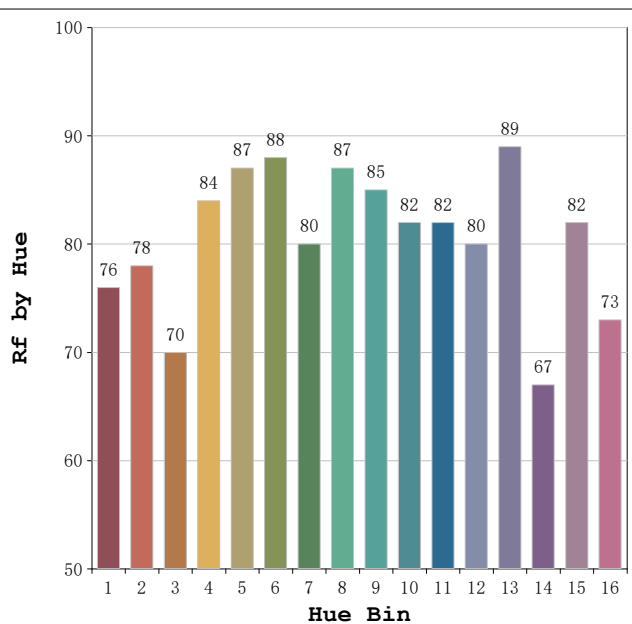
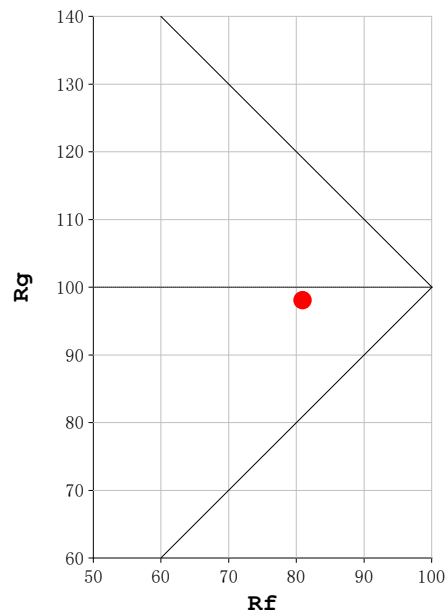
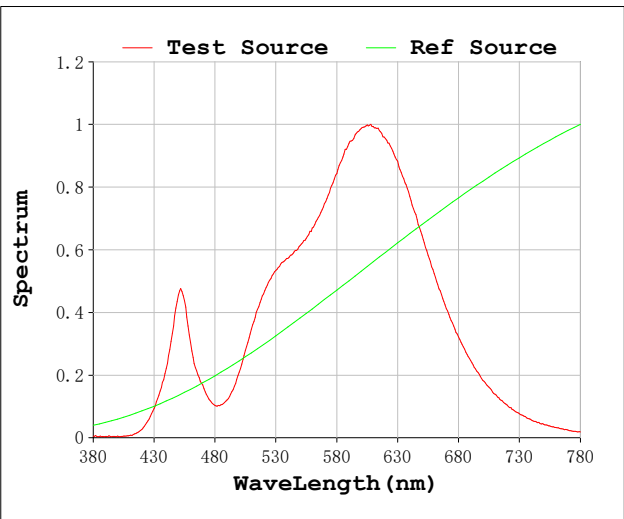
V = 230.10 V I = 0.06847 A P = 13.86 W PF = 0.8794

Status: Integral T = 1000 ms Ip = 41767 (64%)

Model:Ecoled Infinity COB 3000
Tester:Sergio Carneros
Temperature:25Deg
Manufacturer:Luz Negra S.L

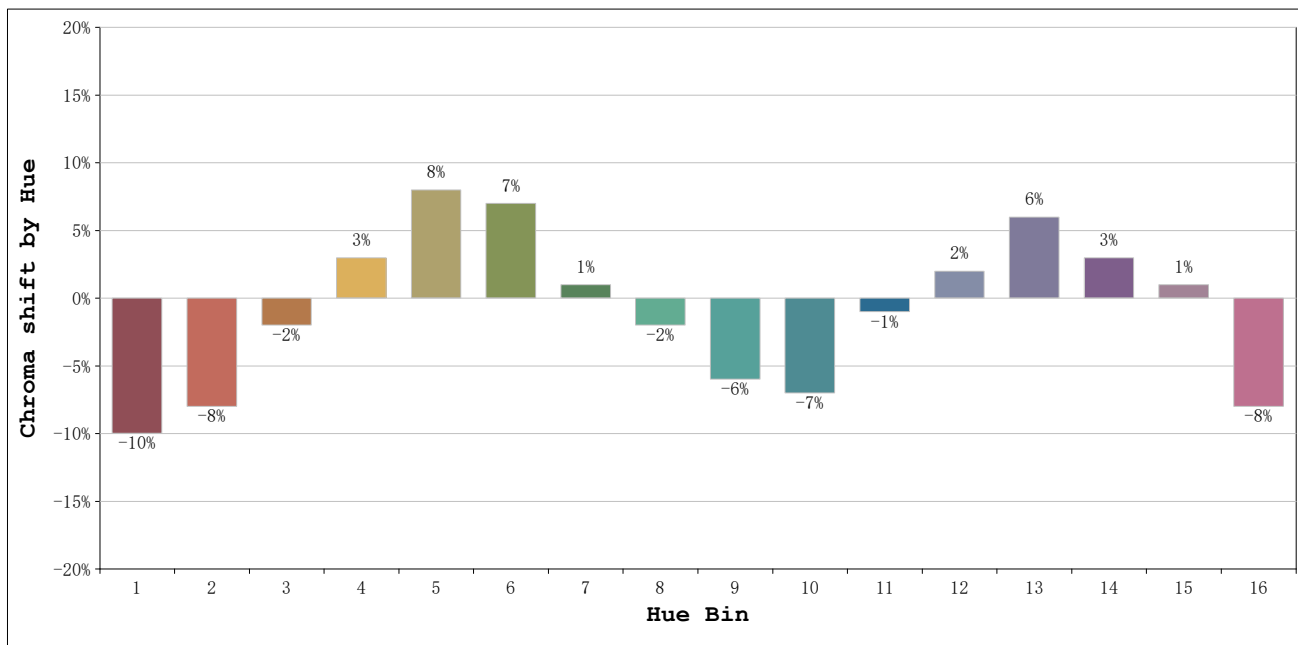
Number: 34.066
Date:2025-12-01 09:19:22
Humidity:51%
Remarks:100cm de tira flexible

Rf: 81 **CCT: 2849 K** **u': 0.2559**
Rg: 98 **Duv: 0.0011** **v': 0.5260**



Model:Ecoled Infinity COB 3000
 Tester:Sergio Carneros
 Temperature:25Deg
 Manufacturer:Luz Negra S.L

Number: 34.066
 Date:2025-12-01 09:19:22
 Humidity:51%
 Remarks:100cm de tira flexible



			Graphic shift(%)	
Hue Bin	Hue Angle	Rf	Chroma	Hue
1	0.0° - 22.5°	76	-10	-1
2	22.5° - 45.0°	78	-8	7
3	45.0° - 67.5°	70	-2	13
4	67.5° - 90.0°	84	3	9
5	90.0° - 112.5°	87	8	6
6	112.5° - 135.0°	88	7	0
7	135.0° - 157.5°	80	1	-10
8	157.5° - 180.0°	87	-2	-6
9	180.0° - 202.5°	85	-6	-2
10	202.5° - 225.0°	82	-7	6
11	225.0° - 247.5°	82	-1	11
12	247.5° - 270.0°	80	2	8
13	270.0° - 292.5°	89	6	-5
14	292.5° - 315.0°	67	3	-18
15	315.0° - 337.5°	82	1	-11
16	337.5° - 360.0°	73	-8	-12

Model:Ecoled Infinity COB 3000
 Tester:Sergio Carneros
 Temperature:25Deg
 Manufacturer:Luz Negra S.L

Number: 34.066
 Date:2025-12-01 09:19:22
 Humidity:51%
 Remarks:100cm de tira flexible